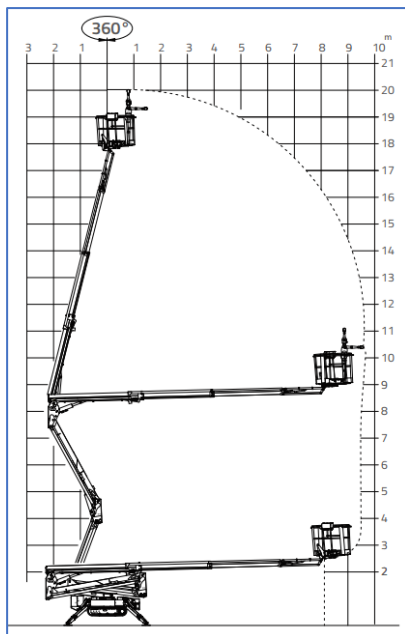




### Kenmerken

- Inzetbaar op ruw terrein
- Eenvoudige bediening
- Laag totaalgewicht
- Compact design
- automatisch afstempelen
- Jip
- Non-marking rupsbanden





## 20m spin / rups hoogwerker Hinowa Type: LL 20.10 IIIS



### Technische Data

<b>Maximale werkhoogte</b>	<b>20,10 m</b>
<b>Maximaal zijdelings bereik</b>	<b>9,7 m</b>
<b>Maximale gondelbelasting</b>	<b>230 kg</b>
<b>Maximale stempelbreedte</b>	<b>2,92 m</b>
<b>Machine lengte</b>	<b>5,01 m</b>
<b>Machine breedte</b>	<b>0,795 m</b>
<b>Machine hoogte</b>	<b>1,98 m</b>
<b>Totaalgewicht</b>	<b>2.940 kg</b>
<b>Afmeting gondel (l x b)</b>	<b>1,33 x 0,69</b>
<b>Rotatie</b>	<b>180°</b>
<b>Aandrijving</b>	<b>Hybride</b>
<b>JIB</b>	<b>Ja</b>
<b>Bandensoort</b>	<b>Rups</b>

### MA-BO Hoogwerkers BV

-  [www.ma-bo.info](http://www.ma-bo.info)
-  0316-745613
-  [planning@ma-bo.info](mailto:planning@ma-bo.info)
-  Hengelderweg 8a, 6942 NC, Didam